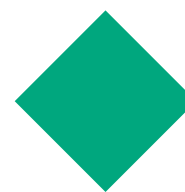


UV LED Module

For exposure devices



- ◆ High-irradiance
- ◆ Homogeneous treatment
- ◆ Achieves IHG spectrum
- ◆ Long service life



High-irradiance

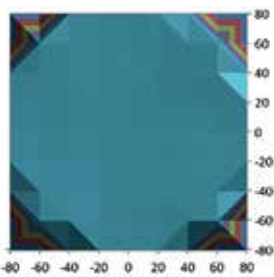
Ushio's optical module design technology could maximize the brightness of LEDs. "uLML" achieves brightness equivalent to the Multi-Light, and is equipped with a 500 W ultra-high pressure UV lamp.

Ushio's original optical system includes an incident surface at the optical integrator, which superimposes all LED images and achieves a high-utilization of LED energy

Homogeneous Treatment

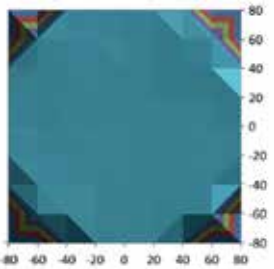
In the past, the use of multiple LED light sources has faced disadvantages in terms of uniformity, when compared to traditional lamps; however, Ushio combines an optical system with an optimal arrangement of multiple LEDs to minimize any impact on surface irradiation uniformity. This results in an acceptable level of homogeneity.

LEDs are 100% active



- ◆ Irradiance at 71% power: 23 mW/cm²
- ◆ Collimation angle (HWHM): 1.6 deg
- ◆ Uniformity : +/-2.0%

LEDs are 80% active



- ◆ Irradiance at 71% power: 20 mW/cm²
- ◆ Collimation angle (HWHM): 1.6 deg
- ◆ Uniformity: +/-2.5%

Developing Solutions Together

Ushio is a partner that listens to your ideas and requirements. Let us optimise your processes according to your specifications and expectations. Use our expertise to develop a tailor-made solution that matches your needs.

USHIO

USHIO EUROPE B.V. - Headquarters
The Netherlands | +31 20 446 9333
uv@ushio.eu | www.ushio.eu

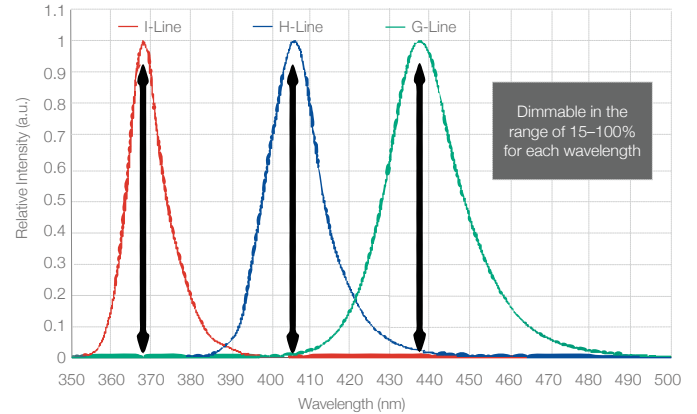
USHIO GERMANY GmbH
Germany | +49 8094 906 0
uv@ushio.de | www.ushio.de

USHIO U.K., LTD.
United Kingdom | +44 1296 339988
uv@ushio.eu | www.ushio.eu

USHIO FRANCE S.A.R.L.
France | +33 134 64 94 94
uv@ushio.eu | www.ushio.eu

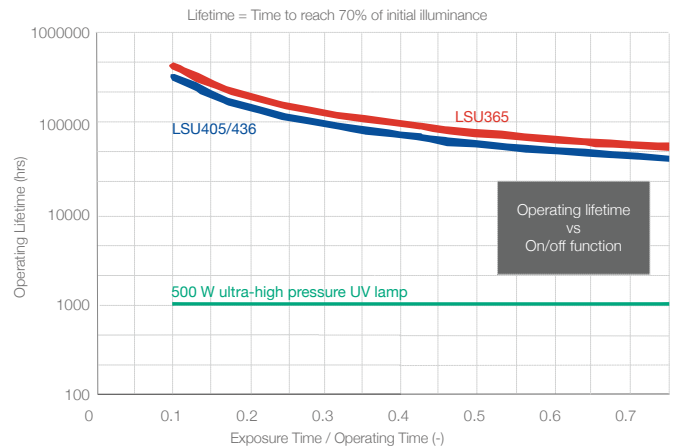
Achieves IHG Spectrum

Each of the i-line, h-line, and g-line wavelengths can be dimmed independently across an intensity range of 15–100%. This allows complete control over the exposure spectrum and the creation of unique intensity recipes without the need for a filter.



Long Service Life

The inclusion of an easy on/off function allows operators to prolong the lifetime of the UV LED module. This allows the light source to maintain its superior illuminance over ultra-high pressure lamps for a longer period of time.



Intended use: Specifically designed and exclusively approved for use in industrial applications that require a particularly high UV output

© Ushio Europe B.V. All texts, contents, images and other graphical representations are protected by copyright. Ushio is owner of the respective copyright and/or rights of use thereto. Any reproduction, distribution, or providing public access is permitted only with the approval of Ushio. Copyright violations are prosecuted by civil and criminal law.

Version: 2023-F-UV-HOUSE-EN